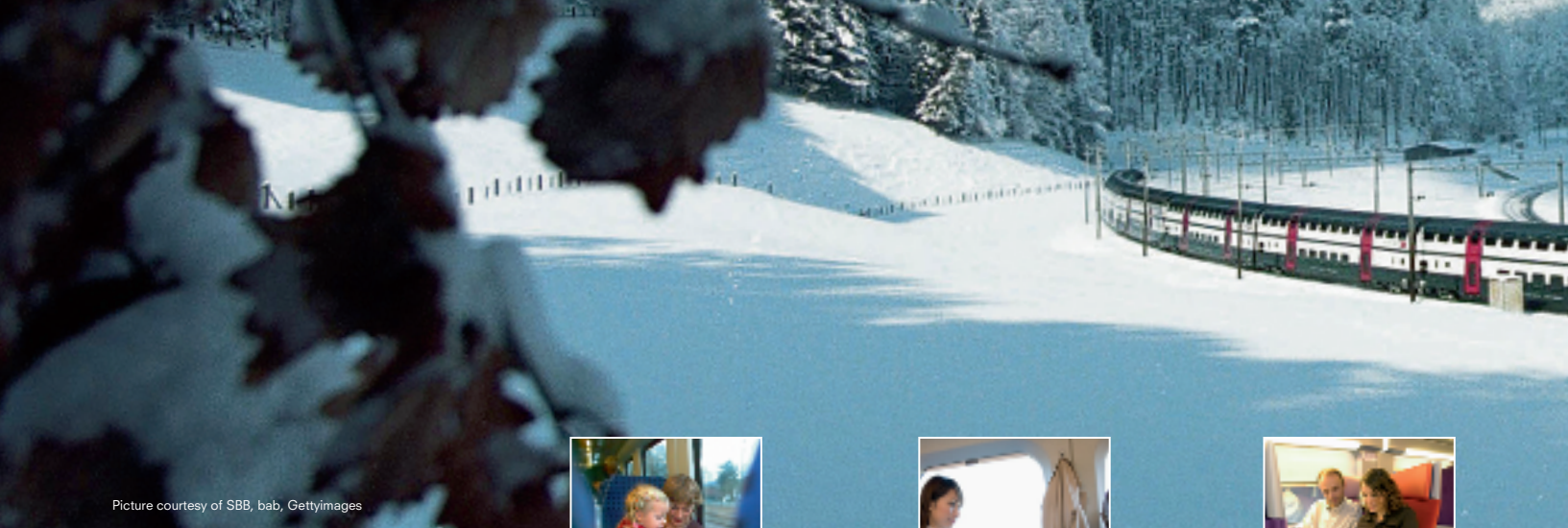


# COMFLOOR



Comfortable heating systems  
for rail vehicles.

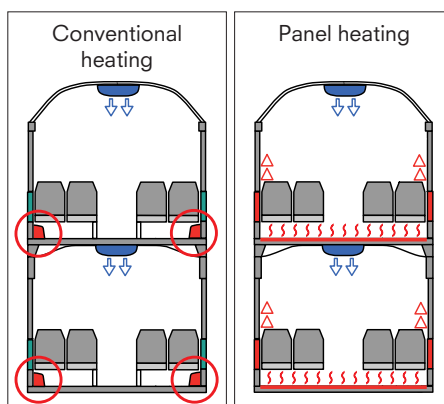


Picture courtesy of SBB, bab, Gettyimages

## Travel in comfort thanks to COMFLOOR, the heatable floor panels for rail vehicles.



**COMFLOOR, the heatable floor panels based on sandwich technology, enhance travel comfort and simultaneously increase cosiness thanks to the even distribution of heat. In order to guarantee a customer-oriented solution together with flawless operation, COMFLOOR has been developed together with designers and engineers from domestic and foreign mass transit manufacturers.**



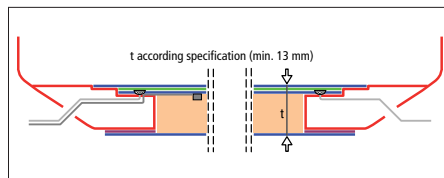
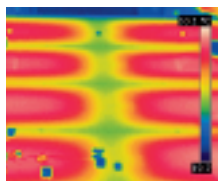
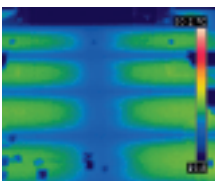
### **Increased seating comfort and greater cosiness**

COMFLOOR, the new panel floor heating system, in combination with side-wall heating, guarantees an even and comfortable climate together with improved leg room. This novel concept also prevents steamy windows.



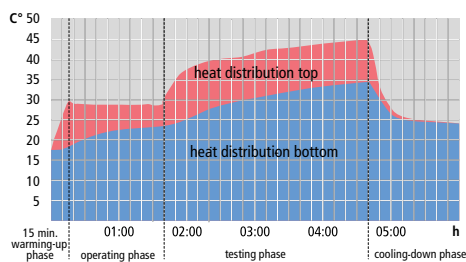


[www.airexcompositestructures.com](http://www.airexcompositestructures.com)



## Customer advantages

- Improved life-cycle cost
- Low weight and installation height
- Optimum heat distribution
- Fully sealed heating elements
- Simple exchangeability
- Maintenance-free heating elements
- Fast installation
- Reduced heat losses

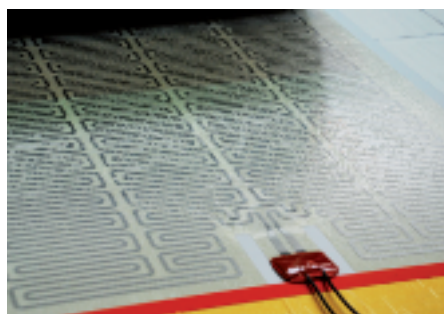


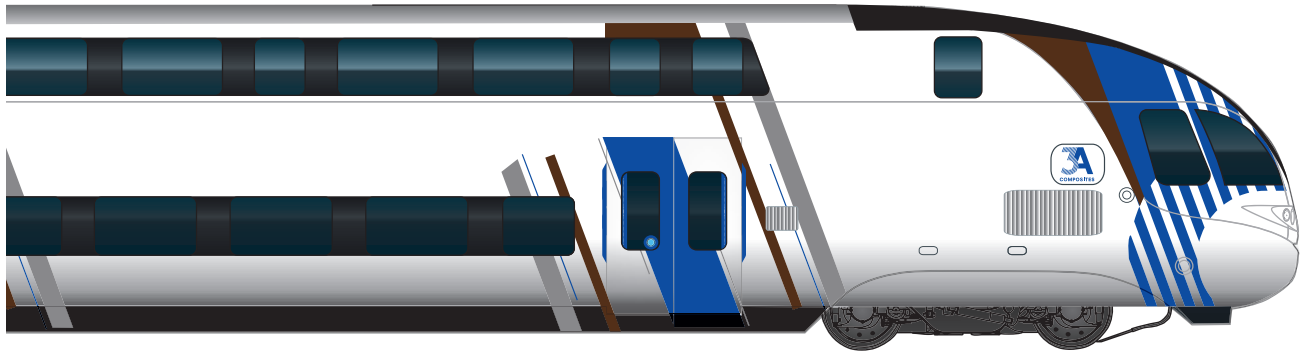
## Reduced operating costs due to better reaction times and optimum heat distribution

The heat-conducting surfaces of COMFLOOR distribute the heat quickly and evenly across the complete surface. COMFLOOR reduces the thermal losses and keeps the operating costs to a minimum. The special design stops the flow of heat downwards and prevents unnecessary outward heat radiation.

## Cost and time savings due to an innovative concept

The state of the art concept of COMFLOOR comprises modular, heated panels. These can be externally preassembled and laid as modular units with speed and ease. COMFLOOR is completely watertight and designed for a life-cycle of over 30 years. The COMFLOOR system is also distinguished due to its simple exchangeability.





## Our performance – your benefit

### Technologies

#### **VAC: Vacuum assisted resin**

- Three dimensional sandwich constructions with glass fiber reinforced plastic layers and rigid foam as core material
- Up to 500 components/year/tool
- Dimensions up to 6 x 4 x 4 m

#### **AVT: AIREX vacuum bonding technology**

- Two dimensional sandwich structures with aluminium skins and rigid foam core
- Up to 1'000 components/year/tool
- With fastening aluminium profiles
- Aluminium reinforcements, inserts
- Dimension up to 2,5 x 20 m

#### **RTM: Resin transfer moulding**

- Structural components with high performance fibres in single skin, sandwich or hollow construction
- For more than 1'000 components/year/tool
- Dimensions up to 3 x 2 x 1 m

#### **Performance**

- Design
- F-E analysis
- Project Management
- Pattern and mould production
- Testing / Prototyping

### Range of Application

#### **Rolling stock and Buses**

Infusion for large structural components in the railway and bus industry, driver's cabs, interior decorating covers, lower covers, roofs and fairing

#### **Rolling stock and Buses**

Composite structures of aluminium and rigid foam for flat or curved components such as floors, intermediate floors, roofs and side panels

#### **Automotive, Industry and Buses**

For structural components such as engine compartment covers, deflectors, baffle plates, roll-bars and body panels

#### **Your benefit**

- Sustainable solutions
- Freedom of design
- Modular construction
- Profitable total expenses



#### **AIREX COMPOSITE STRUCTURES**

Airex AG

Park Altenrhein

9423 Altenrhein, Switzerland

Tel +41 71 858 48 48

Fax +41 71 858 48 58

[www.airexcompositestructures.com](http://www.airexcompositestructures.com)

[acs.info@3AComposites.com](mailto:acs.info@3AComposites.com)